

Phone: 916.683.7111
Fax: 916.691.3168

Web: www.elkgrovecity.org

8401 Laguna Palms Way
Elk Grove, California 95758



Modification or Addition to Improvement Standards and Details

Modification Number: SD-12-01; SD-13-01; SD-18-01 and SD-19.1-01

Effective Date of Change: 5/24/2010

Modification:

1. Revise Standard Drawing Nos. SD-12, SD-13, SD-18 and SD-19.1 to increase the maximum depth of drop inlets from 4-5 feet to 8 feet.

This modification shall apply to all projects for which a tentative map and/or development application has not been made of the Effective Date, but may be applied to any project if the applicant so elects.

Effect of Modification:

1. Increases the maximum depth of drop inlets from 4-5 feet to 8 feet, which will allow more flexibility in designing lateral drainage leads by avoiding conflicts with other utilities at crossings.

Request for Modification Initiated By:


Darren Wilson

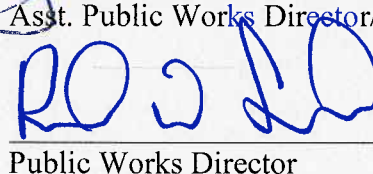
5/24/10
Date

Modification Reviewed for Conformity and Consistency to Standards:

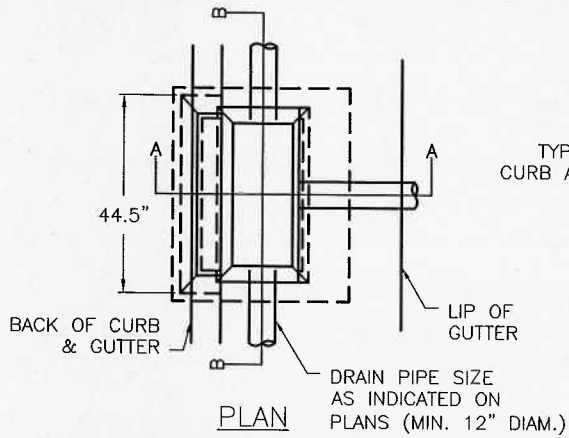

Asst. Public Works Director/City Engineer

5/25/10
Date

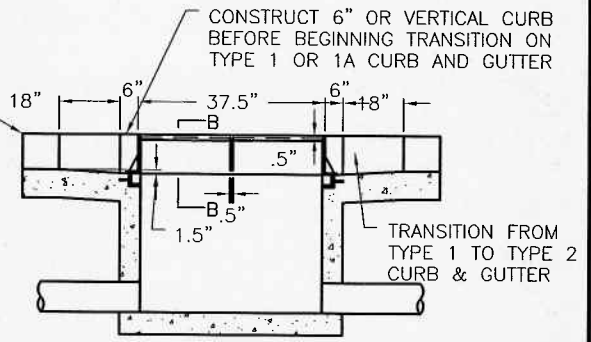
Modification to Improvement Standards Approved:


Public Works Director

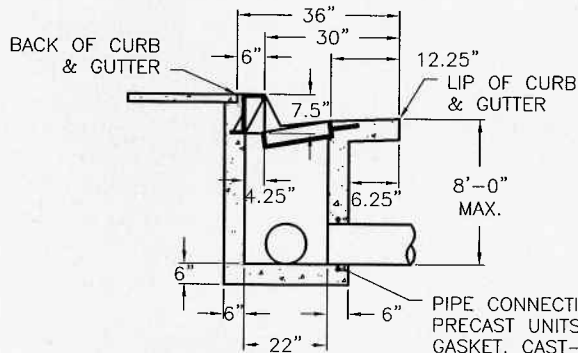
5/26/10
Date



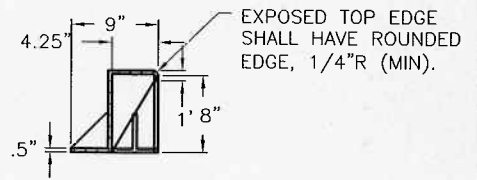
TYPE 1 OR 1A CURB AND GUTTER



SECTION B-B

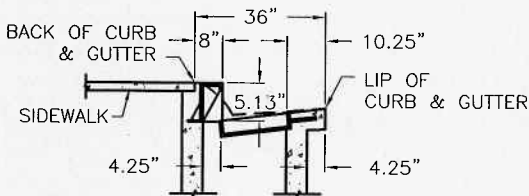


SECTION A-A
TYPE 2-VERTICAL C&G

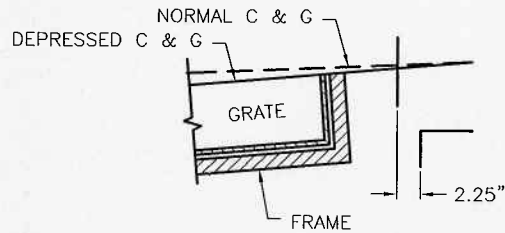


SECTION C-C
OPEN-BACK HOOD

PIPE CONNECTIONS SHALL CONFORM TO ASTM C-923. PRECAST UNITS SHALL BE BOOT TYPE OR COMPRESSION GASKET. CAST-IN-PLACE UNITS SHALL INCLUDE A WATER STOP.



SECTION A-A
TYPE 1 & 1A - ROLLED C&G



CURB AND GUTTER WITH FRAME DETAIL

NOTES

1. STANDARD DEPRESSION FOR INLET IS 1-1/2" AND LIP OF GUTTER MUST BE SET BACK 3" FROM GUTTER FLOW LINE.
2. FRAME AND GRATE SHALL CONFORM TO STANDARD DRAWINGS SD-14 AND SD-15.
3. OPEN-BACK HOOD SHALL BE H-20 RATED.
4. EXPOSED EDGES SHALL HAVE A 1/8" R (MINIMUM).
5. AN EDGING TOOL SHALL BE USED ON ALL EDGES WHERE THE CONCRETE SIDEWALK AND CURB MEET THE TOP OF THE HOOD.
6. ALL EXPOSED PARTS TO BE HOT DIP GALVANIZED PER ASTM A123, AFTER FABRICATION.

DATE: 02/12/2007		NOT TO SCALE	
REVISION	BY	APPROVED	DATE
1	DC	DW	05/17/2010

CITY OF ELK GROVE - PUBLIC WORKS

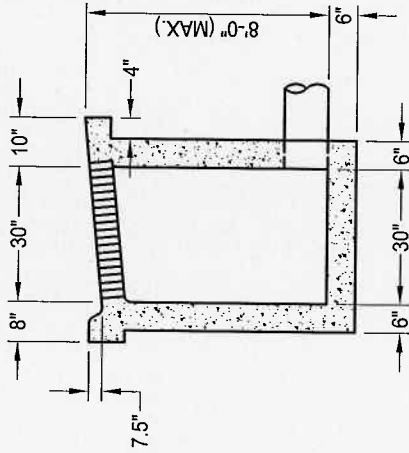
**DROP INLET
TYPE B**

APPROVED BY:

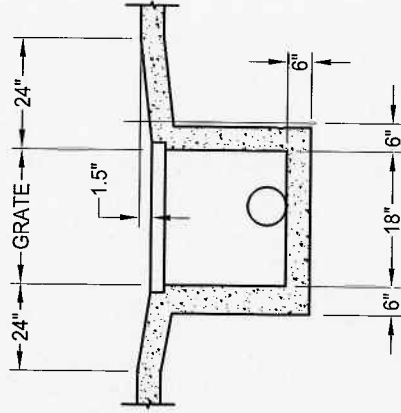
CITY ENGINEER

DRAWING NUMBER
SD - 12

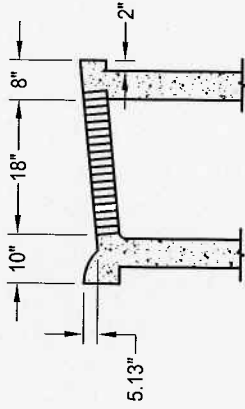




TYPE 2 CURB

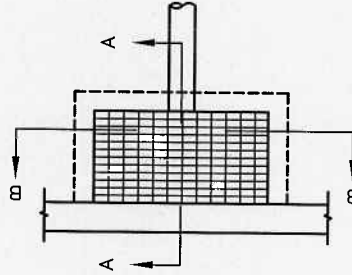


SECTION B-B



TYPE 1 OR 1A CURB

SECTION A-A



NOTES

1. STANDARD DEPRESSION FOR INLET IS 1-1/2".
2. FRAME AND GRATE SHALL CONFORM TO STANDARD DRAWINGS SD-14 AND SD-15.
3. OPEN-BACK HOOD SHALL BE H-20 RATED.
4. ALL EXPOSED EDGES SHALL HAVE A 1/8" R (MINIMUM).
5. AN EDGING TOOL SHALL BE USED ON ALL EDGES WHERE THE CONCRETE SIDEWALK AND CURB MEET THE TOP OF THE HOOD.
6. ALL EXPOSED PARTS TO BE HOT DIP GALVANIZED PER ASTM A123, AFTER FABRICATION.

DATE:	NOT TO SCALE		
02/12/2007	APPROVED	DW	DATE
REVISION	BY		
1	DC		05/17/2010

CITY OF ELK GROVE - PUBLIC WORKS

**DROP INLET
TYPE C**

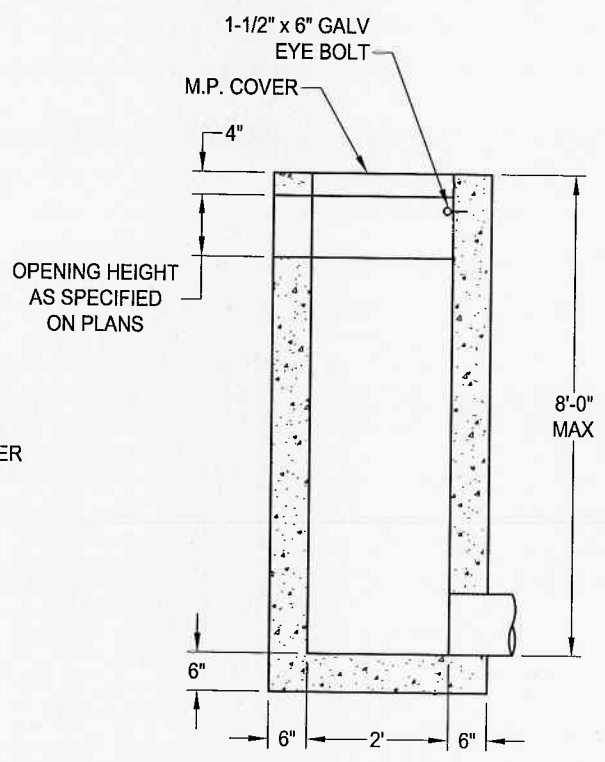
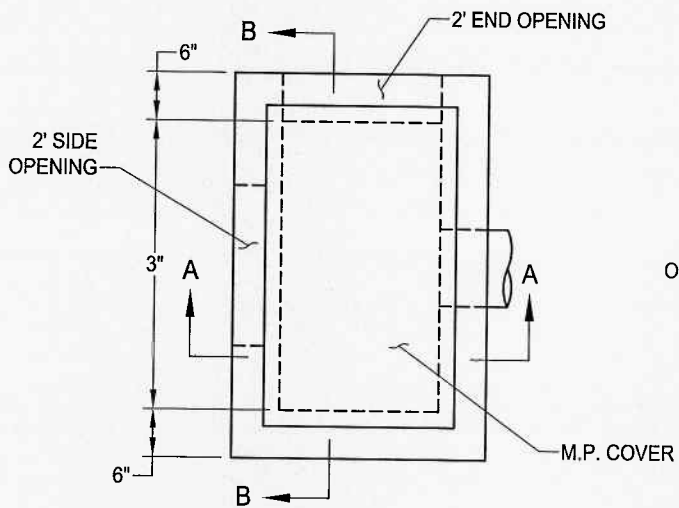
APPROVED BY:

CITY ENGINEER

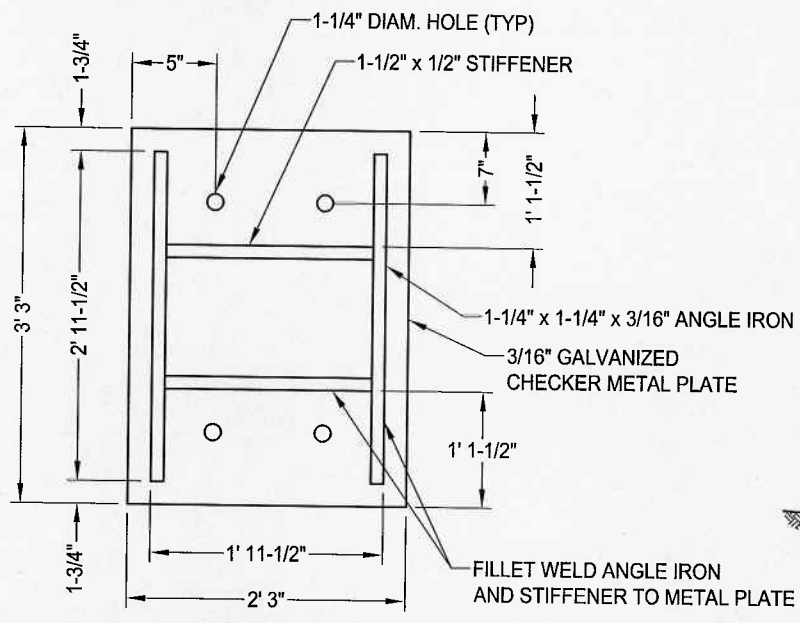


DRAWING NUMBER

SD - 13

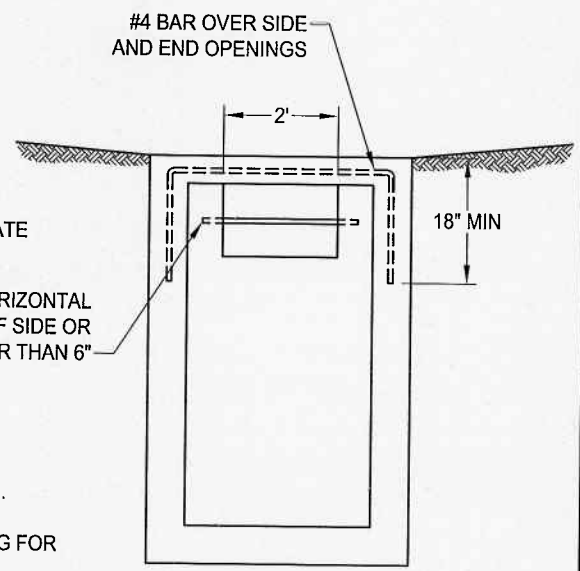


SECTION A-A



METAL COVER (UNDERSIDE)

PLACE 1/2" DIAM. HORIZONTAL BAR IN CENTER OF SIDE OR END OPENING GREATER THAN 6"

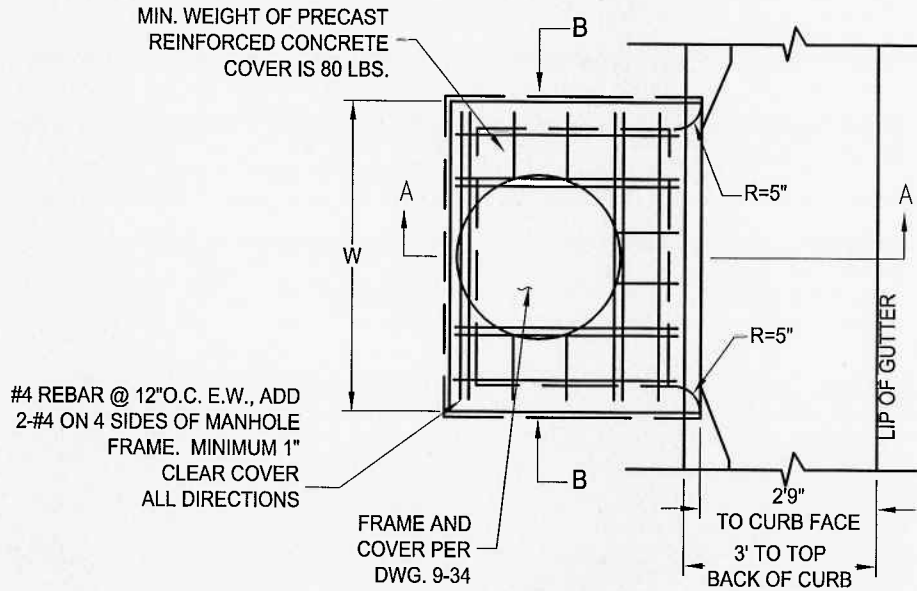


SECTION B-B

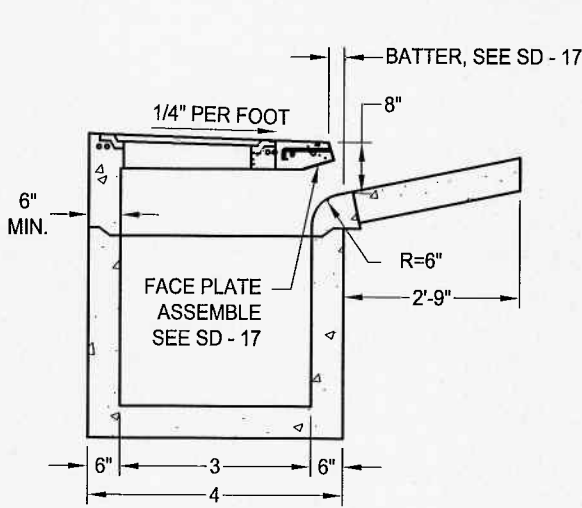
NOTES:

1. PROVIDE 1/4" x 18" GALVANIZED CHAIN WELD TO COVER AND EYE BOLT.
2. PROVIDE END OR SIDE OPENINGS AS SHOWN ON PLANS OR CROSS SECTION.
3. TOP OF WALLS TO BE FINISHED TO A FLAT PLANE TO PROVIDE EVEN BEARING FOR PLATE COVER.
4. ALL METALS SHALL BE HOT DIP GALVANIZED PER ASTM A123.

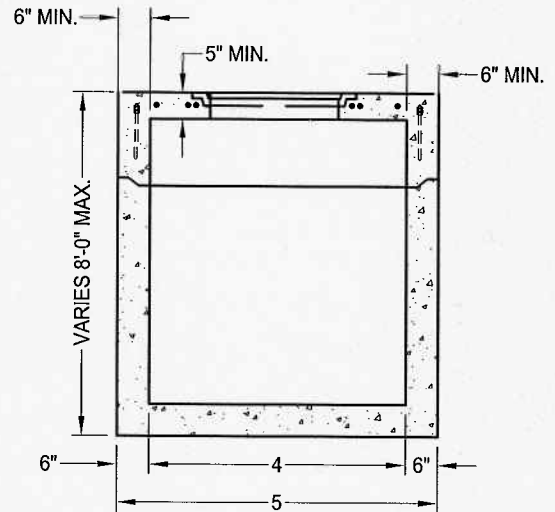
DATE: 02/12/2007		NOT TO SCALE		CITY OF ELK GROVE - PUBLIC WORKS		APPROVED BY: 	
REVISION		BY	APPROVED			DATE	CITY ENGINEER
1		DC	DW	05/17/2010	DROP INLET TYPE F		DRAWING NUMBER
							SD - 18



PLAN



SECTION A-A



SECTION B-B

NOTES:

1. CURB INLET ASSEMBLY MAY BE PRECAST CONCRETE OR FORMED AND CAST-IN-PLACE P.C.C.
2. ALL METAL SHALL BE HOT DIP GALVANIZED PER ASTM A123.
3. SEE STANDARD DRAWING SD - 17 FOR FACE PLATE ASSEMBLY.

DATE: 02/12/2007		NOT TO SCALE	
REVISION	BY	APPROVED	DATE
1	DC	DW	05/17/2010

CITY OF ELK GROVE - PUBLIC WORKS

DROP INLET TYPE G
TYPE 2 C&G ONLY
(PG 1 OF 2)

APPROVED BY:
[Signature]
CITY ENGINEER



DRAWING NUMBER

SD - 19.1